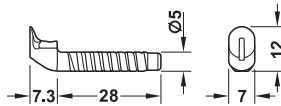


Häfele Ixconnect CC 8/5/30 Claw connector

For fixing front panels of wooden drawers

- > One-piece connector
- > Suitable for thin front panels
- > Concealed application
- > Easy assembly without tools
- > Removable

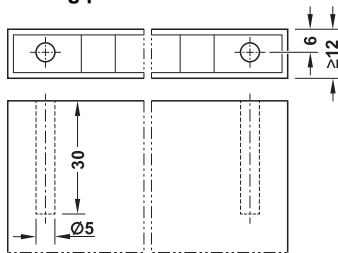


- > Area of application: For fixing front panels of wooden drawers, for use with chipboard
- > For wood thickness: Front panel and drawer sides: From 12 mm
- > For drill hole Ø: 5 mm, 8 mm
- > Installation: Pre-assembly in the drawer side by screwing or press fitting the connector into the 5 mm drill hole, the connector grips into the 8 mm drill hole of the front panel when the drawer side is raised
- > Functionality: The connector grips into the front panel when the drawer side is raised and thus provides a secure, concealed connection.

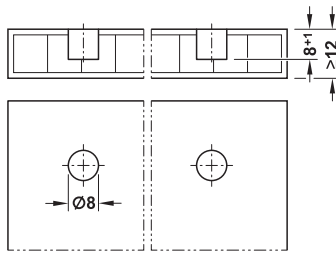
Material	Finish	Cat. No.
Zinc alloy	Bright	262.11.113

Packing: 100, 1500 or 120000 pieces

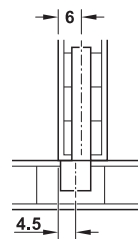
Drilling pattern



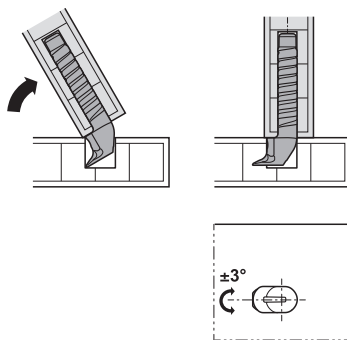
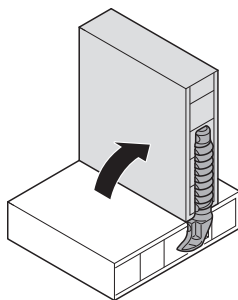
Drill hole in drawer side



Drill hole in front panel



Installation



Tolerance for aligning the claw: ± 3°